

GG 5100
JACKET FRONT CHEST INTERLINING FEEDING AUTOMAT



HEAD OFFICE

Basin Expres Yolu Mehmet Akif Mah. Bahariye Cad. No:105
34303 K.Çekmece / İSTANBUL / TURKEY
Tel: +90 212 472 01 01
Fax: +90 212 612 79 65

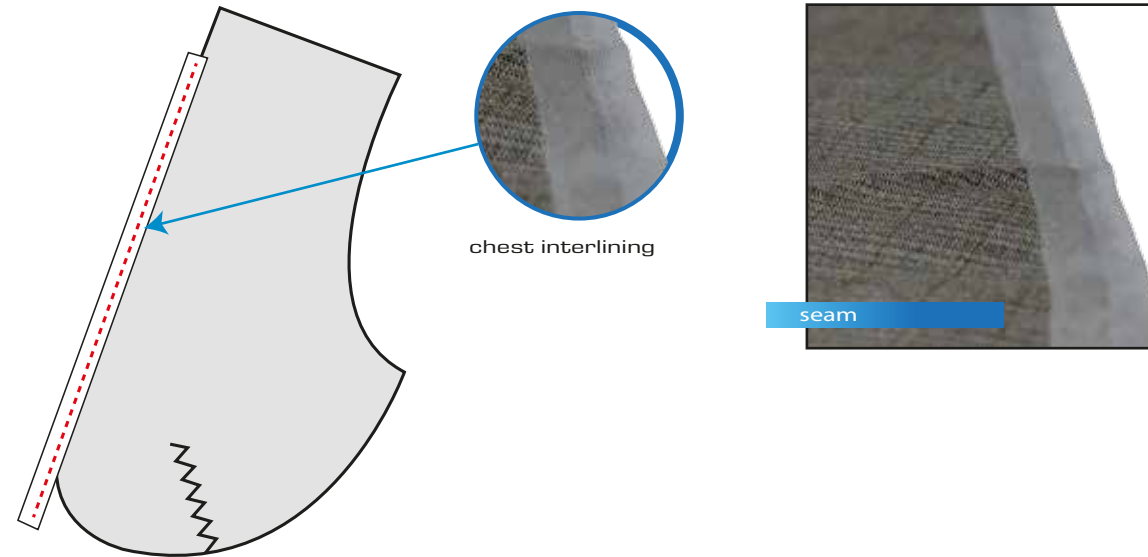
FACTORY

Konya Ankara Yolu. Havaalanı Kavşağı
No: 213
42100 Selçuklu / KONYA
Tel: +90 332 358 01 01
Fax: +90 332 358 09 00

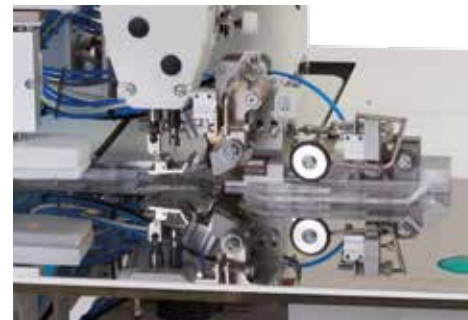


GG 5100

JACKET FRONT CHEST INTERLINING FEEDING AUTOMAT



Max. Sewing Speeds : 5.000 r.p.m
Max. Stitch Length : 0,5 or 5 mm
Stitch type : 301 (Lockstitch)
Connection Voltage: Single-Phase A.C. 230 V, 50/60 Hz
Air Pressure : 6 bar



GG 5100



GG 5100

GG 5100

JACKET FRONT CHEST INTERLINING FEEDING AUTOMAT

GG 5100 Tapes can be attached to jacket Chest Canvas. With a low work input this automatic unit guarantees high quality combined with high efficiency . The machine is equipped with a tape feeding device, tape cutter, thread trimmer and the option to predetermine the seam length. The tape feeding device guarantees reliable tape feeding.

TECHNICAL SPECIFICATIONS

Brother Model C series direct-drive lock stitch sewing head

Beijer Electronics, Windows Bused 256 Million Colour Supported Touch Control Panel

Easy to use, with Pictures on the Operator Panel and with 50 Different Programming and Cycle Operation Possibilities

EFKA 550 W Mini Stop DC or Direct Drive DC Servo Sewing Motor

PLC Control Unit (WestingHouse/Teco AC Servo Motor)

Step Motor Controlled tape feeding and Cutting Unit

Automatic thread trimming and cleaning system at the end of sewing

Automatic Foot lifting

Button Controlled tape feeding unit lifting station to feed thread

Height-adjustable triangular machine frame enabling front operation

Special Stacker Unit

PERFORMANCE

600-700 Jacket / 8 Hours

DIMENSIONS

Length : 125 cm

Width : 105 cm

Height : 170 cm

Packing Size : 186 cm x 117 cm x 145 cm

Machine Net Weight : approx. 200 kg

Machine Gross Weight : approx. 240 kg