

UK 4100 - IX
CENTER - BACK AND SLEEVE SEAM AUTOMAT



HEAD OFFICE

Basin Expres Yolu Mehmet Akif Mah. Bahariye Cad. No:105
34303 K.Çekmece / İSTANBUL / TURKEY
Tel: +90 212 472 01 01
Fax: +90 212 612 79 65

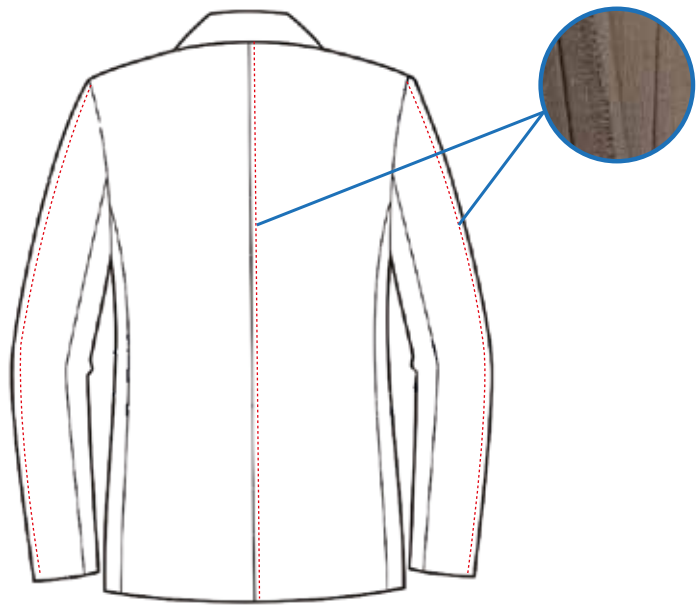
FACTORY

Konya Ankara Yolu. Havaalanı Kavşağı
No: 213
42100 Selçuklu / KONYA
Tel: +90 332 358 01 01
Fax: +90 332 358 09 00



UK 4100 - IX

CENTER - BACK AND SLEEVE SEAM AUTOMAT



seam

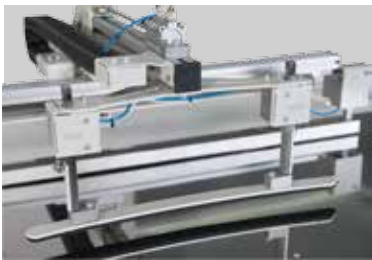
Max. Sewing Speeds : 5.000 r.p.m
Max. Stitch Length : 0,5 or 5 mm
Stitch type : 301 (Lockstitch)

Connection Voltage:
Single-Phase A.C. 230 V, 50/60 Hz

Air Pressure : 6 bar



UK 4100 - IX



UK 4100 - IX



UK 4100 - IX



UK 4100 - IX

UK 4100 - IX

CENTER - BACK AND SLEEVE SEAM AUTOMAT

Long seams such as Center-back and sleeve seams are sewn by the sewing unit UK 4100-IX with a constantly high quality. The integrated feed technology allows a universal use for most different materials.

An X/Y controlled sewing program according to the desired seam contour holds and guides the material exactly without any shaped-rail systems. The Machine runs not on a shape only the presser foot is shaped which can be made easily without any big costs. Furthermore, the units offer an enormous performance and simplest operation owing to the fully automatic work-flow.

TECHNICAL SPECIFICATIONS

Yamato JF 2300 M Sewing Head
Beijer Electronics, Windows Based 256 Million Colour Supported Touch screen Control Panel
Easy to use, with Pictures on the Operator Panel and with 50 Different Programming
Sequential/Cycle Programming for Different Arm Elbow or Back seams
PLC Control Unit Motion Control Unit with X/Y Axis Program
Teco (WestingHouse) AC Servo Motor& Driver Controlled Clamp Unit on X Axis
Sewing head moving on the Y axis
Standardization for different arm elbow or back seams of 85 mm length maximum
Program Recall from Panel for Sewing Different Arm elbow or back seams
Non-shape-rail sewing on X/Y axis for different arm elbow or back seams
Automatic loading with vacuumed robot-arm during sequential sewing work
Perfect completion of elbow-angular stitch at requested angle (between 10°-90° degrees)
Programmable seam interruption for lining sleeve seams
Vacuumed suction fitting for easy placement of fabric on machine
Easy-to- convertible and cost efficient pressing shape for higher quality of sewing
Programmable start and end back tack or optionally adjustable stitch condensing
Automatic Thread Cutting and Cleaning System at the end of sewing
Specially Designed pneumatic stacking unit for compact machine
Vacuum motor connection preparing unit
Error Detecting Systems
Thread monitor
Pneumatic fast stacking
Stitch length 10 cm — 85 cm
Stitch edge depth: 5 —20 mm

ACCESSORY OPTIONS

Vacuum Motor various moulds for desired model
Extra Reference Lasers Lamp

AREAS OF USAGE

Arm elbow side, Arm elbow lining and jacket center-seam
(with single or double slit) various curved or straight long stitches

PERFORMANCE

1.500 pieces of pert stitching / 8 Hours

DIMENSIONS

Lenght : 210 cm
Width : 100 cm
Height : 130 cm
Packing Size : 220 cm x 117 cm x 145 cm
Machine Net Weight : approx. 210 kg
Machine Gross Weight : approx. 250 kg