



GM 5100

JACKET FRONT CHEST INTERLINING FEEDING AUTOMAT



Website

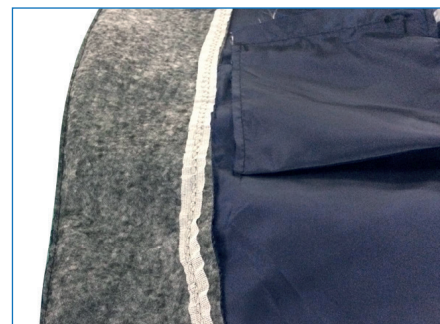
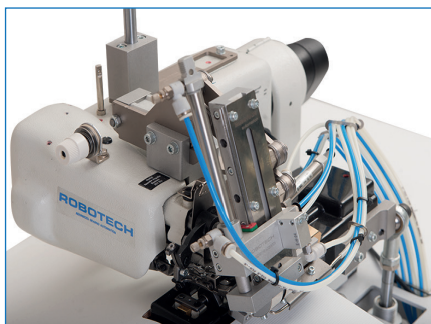
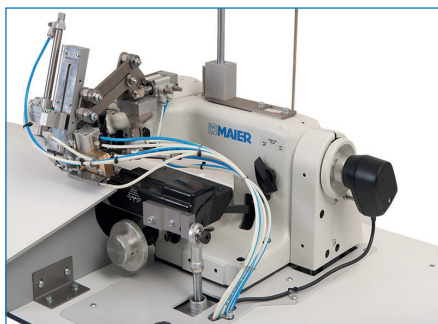


Youtube

PERFORMANCE

75 - 90 Jackets / 1 Hour

600 - 700 Jackets / 8 Hours



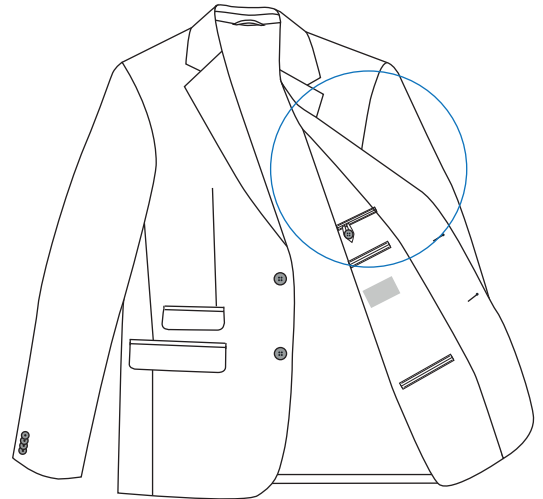
GM 5100 is a single thread blind stitch sewing unit for fusible coated tapes. Fusible tapes coated on one side can be attached to jacket fronts or facings to be fused to the jackets. This semi-automatic unit guarantees high quality combined with high efficiency. The machine is equipped with a tape feeding device, tape cutter, thread trimmer and the option to predetermine the seam length. The tape feeding device guarantees reliable tape feeding. GM 5110 PS is the single thread blind stitch sewing unit for fusible coated tapes with roller pallet and stacker in addition to the same specifications of the 5100 version.

TECHNICAL SPECIFICATIONS

- **Maier 251** Sewing Head with spring-loaded rib shaft/plunger
- Sewing Motor : AC Servo Motor (Optional : EFKA Mini Stop Motor)
- **PLC** Control Unit
- Pneumatic Feeding and cutting device of tape
- Automatic thread trimming and cleaning system at the end of sewing
- Automatic Foot lifting
- Button Controlled tape feeding unit lifting station to feed thread
- Curved table for easy fabric flow during stitching
- Height-adjustable triangular machine frame enabling front operation

OPTIONS

- Step Motor Controlled tape feeding and Cutting Unit



TECHNICAL DETAILS

Max. Sewing Speed : 3.000 r.p.m
 Max. Stitch Length : 5 - 8 mm
 Stitch Type : Single thread blind stitch
 Tape Width: 15 mm - 25 mm
 Connection Voltage: AC 230 V, 50/60 Hz
 Air Pressure : 6 bar

DIMENSIONS

L: 125 cm / W: 85 cm / H: 125 cm
 Packing Size : 127 cm x 89 cm x 145 cm
 Machine Net Weight : approx. 170 kg
 Machine Gross Weight : approx. 200 kg

