

FF 6000-TR
POCKETWELT AUTOMAT



HEAD OFFICE

Basin Expres Yolu Mehmet Akif Mah. Bahariye Cad. No:105
34303 K.Çekmece / İSTANBUL / TURKEY
Tel: +90 212 472 01 01
Fax: +90 212 612 79 65

FACTORY

Konya Ankara Yolu. Havaalanı Kavşağı
No: 213
42100 Selçuklu / KONYA
Tel: +90 332 358 01 01
Fax: +90 332 358 09 00



FF 6000 TR

POCKETWELT AUTOMAT



FF 6000-TR



FF 6000-TR



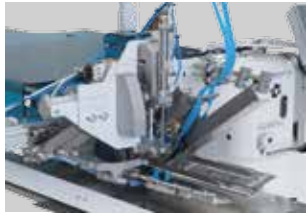
FF 6000-TR



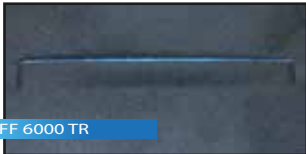
FF 6000-TR



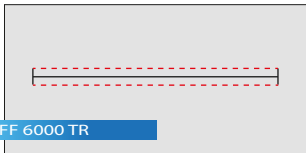
FF 6000-TR



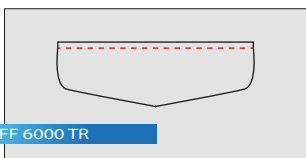
FF 6000-TR / ZP



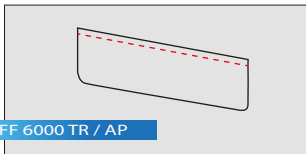
FF 6000 TR



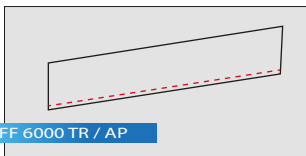
FF 6000 TR



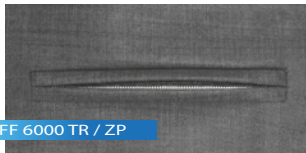
FF 6000 TR



FF 6000 TR / AP



FF 6000 TR / AP



FF 6000 TR / ZP



FF 6000 TR / ZP

Max. Sewing Speeds : 3.000 r.p.m
Max. Stitch Length : 0,5 or 3 mm
Stitch type : 301 (Lockstitch)
Needle Distances : 8 - 22 mm Standart
24 - 36 mm Optional
Connection Voltage: Single-Phase A.C. 230 V, 50/60 Hz
Air Pressure : 6 bar

FF 6000 TR

POCKETWELT AUTOMAT

Economic Version

The sewing unit for piped pockets FF 6000-TR allows an efficient and flexible production of straight and optionally slanted welt pockets, **with constant knife system**, flap pockets and inside pockets for the production of men's and lady's jackets, coats, blazers, anoraks and trousers on a maximum quality level.

A wide range of optional equipment is available for the various fields of application

TECHNICAL SPECIFICATIONS

Brother Model C series direct-drive Needle transport lock stitch sewing head
Beijer Electronics, Windows Bused 256 Million Colour Supported Touch Control Panel
Easy to use, with Pictures on the Operator Panel and with 50 Different Programming and Cycle Operation Possibilities
PLC Control Unit Westing House/Teco AC Servo Motor & Driver Controlled Clamp Unit
Efka 550 W Mini Stop DC or Direct Drive DC Servo Sewing Motor
Linear Motor Controlled Middle Knife System
Laser Photocell System Measuring the Size of the Pockets flaps and Sewing them
Front-Middle-Rear .Four Laser Reference Lines for stitch control
Pocket Welt length sizes from 20 mm to 200 mm
Fixed Corner Knife System (Knife system is constant the clamp is moving)
Corner Knives and Connection Unit providing 3 Dimensional Adjustments
Programmable start and end back tack or optionally adjustable stitch condensing
With double and single welt pocket device
Automatic change system for quick attachment replacement (single/double welt)
Holder-clamp for Pocket Flap and Pocket Bag on Right or Left
Lifting opportunity of the Sewing Head for Easy Maintenance by the Technician
Automatic thread Cutting System in the Beginning and End of Seam
Upper Thread Monitor and Bottom Thread Monitor
Micro Adjustment Unit for Right-Left Gramer
Changeable Needle-bar, Stitch-plate and sheet-plate set between 6 mm and 36 mm

OPTIONS

- Automatic tape feeder
- Vacuum Motor (220 AC or 380 AC) and Connection Unit
- Direct Connection Unit to Central Vacuum System
- Universal Stacker Unit
- Roll-off device Unit for small Pieces
- Fabric stretching bar
- Sandwich Clamp Connection Unit

DIMENSIONS

Lenght : 140 cm
Width : 80 cm
Height : 120 cm
Packing Size : 164 cm x 94 cm x 145 cm
Machine Net Weight : approx. 200 kg
Machine Gross Weight : approx. 240 kg

FF 6000 TR Piped Pocket Automatic Machine with Needle Transport

Automatic Machine for All Pockets Application with/without Flaps, Single or Double welt
Performance: 8 hours/2.300-2.600 pieces

FF 6000 TR / AP Slanted Piped Pocket with Needle Transport Automatic machine

You can sew Slanted Pocket welts on Body, Lining and Breast. Also you can use as ordinary straight Pocket welt (Single/double) automat
Performance: 8 hours/2.000-2.200 pieces

FF 6000 TR / ZP Zip Lining Automatic Machine with Needle Transport

Operation with endless zipper on rolls. Automatic system for the placement of the zip in the pocket.
End cutter of the zip after sewing. Also you can use as ordinary straight Pocket welt (Single/double) without zipper.
Performance: 8 hours/1.900-2.000 pieces

FF 6000 TR / AP / ZP Zip lining Automatic Machine with Slanted Pocket Needle Transport

Developed Pocket Welt Automat for all kind of slanted pocket models with/without zipper.
Performance: 8 hours/1.900-2.000 pieces