

AS 5100 CC / Cold Cut (knife)
AS 5200 US / Ultrasonic Cut
HANGER LOOP ATTACHING AUTOMAT



Website

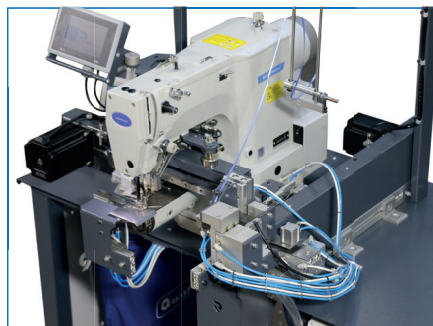
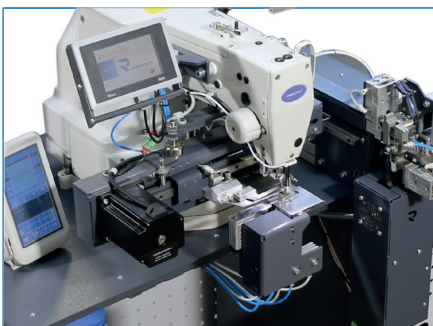


Youtube

PERFORMANCE

125 - 150 Loops / 1 hour

1000 - 1200 Loops / 8 hours



Satin and nylon hanger loop attaching automat with auto cutter and adjustable loop length system.

AS 5100 CC : Loop Curves face outside the garment with cold cut.

AS 5200 US : Loop Curves face outside the garment with ultrasonic cut.

TECHNICAL SPECIFICATIONS

- Direct Drive **Brother** head
- Step motor controlled adjustable loop length
- Automatic Thread cutter
- Knife cutting system for loops
- Nylon and Satin hanger possible
- Auto changer for basic and double breaker

AS 5100 CC

- Loop Length : 50 mm – 300 mm
- Loop Width : 3 mm – 10 mm

AS 5200 US

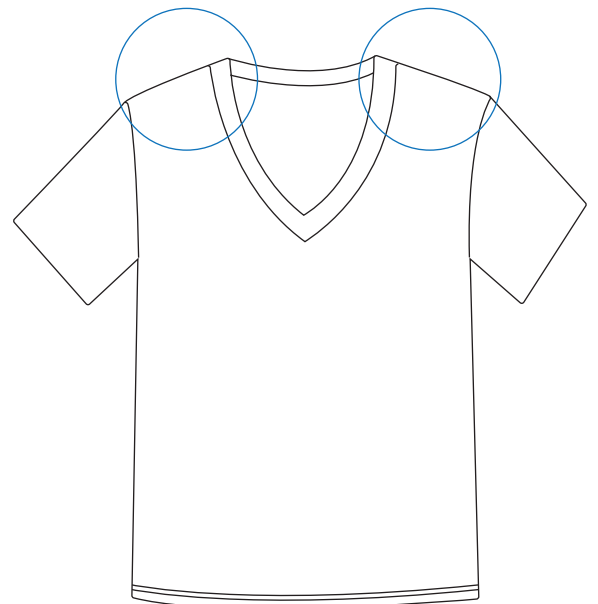
- Loop Length : 15 mm – 300 mm
- Loop Width : 3 mm – 10 mm

TECHNICAL REQUIREMENTS

Max Sewing Speed : 3500 rpm

Connection Voltage: Single-Phase A.C. 230 V, 50/60 Hz

Air Pressure : 6 bar



DIMENSIONS

L: 115 cm / W: 80 cm / H: 120 cm

Packing Size : 140 cm x 90 cm x 125 cm

Machine Net Weight : approx. 160 kg

Machine Gross Weight : approx. 200 kg

