

**LB 6300 - IX** Cold Cut with Knife

**LB 6310 - IX** Ultrasonic

AUTOMATIC CARE LABEL DISPENSER



Website



Youtube

## PERFORMANCE

Performance : 5-6 sec. / cycle

1100 - 1200 Label Set in 1 hour

8800 - 9600 Label Set in 8 hours

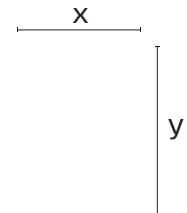


The Automat is used for automatic book-making of up to 8 different washing-care labels from Continuous Rolls of Labels. The automat cuts, optionally folds, collects & puts together 4 to 8 different sizes and lengths of care labels then carries them to the Bartack Sewing head. LB 6310 - IX version is equipped with Ultrasonic Cutting system that can cut all various types of label materials in different dimensions.

The LB-6300 Series can save up to 12 manual labor from the label preparation operation!

## TECHNICAL SPECIFICATIONS

- Brother Type direct-drive Bartacking Head
- PLC Control System
- Beijer Brand, Windows Based 256 Million Color Supported Touch Screen Control Panel
- Automat can cut, optionally fold & combine 4 to 8 different labels from rolls
- The system can work with almost all types of labels including synthetic, paper, satin or mix.
- Label cutting start & finish positions are controlled by photocell
- Label cutting fine adjustments from the touch-panel
- Easy to use Graphics on the Operator Panel with 50 Different Programming
- Sequential / Cycle programming for different label models
- Adjustable Bar-Tack width through touch screen panel
- Very Fast, highly efficient, and easy to use with ONE OPERATOR
- Can save up to 12 manual labor from the Care Label Preparation Operation
- Error Detecting Systems
- Thread monitor



Min x: 10 mm  
Max x: 55 mm

Min y: 10 mm  
Max y: 120 mm

## OPTIONS

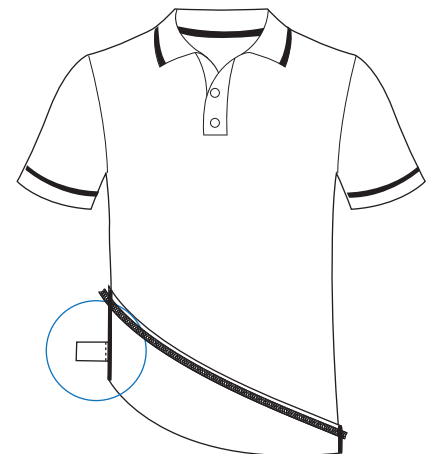
- Label Folders on any Label Roll Head which can be turned ON or OFF depending on the requirement

### LB 6300 - IX

LB 6210 - IX / 4 : (4 head)  
LB 6210 - IX / 6 : (6 head)  
LB 6210 - IX / 8 : (8 head)

### LB 6310 - IX

LB 6210 - IX / 4 : (4 head)  
LB 6210 - IX / 6 : (6 head)  
LB 6210 - IX / 8 : (8 head)



## DIMENSIONS (Bar-tack Unit)

L: 110 cm / W: 60 cm / H: 71 cm  
Packing Size L: 130 cm x 77 cm x 115 cm

Machine Approx. Weight : 151 kg  
Machine Gross Weight : 171 kg

## DIMENSIONS (Dispenser Unit -LB 6210 - IX / 6)

L: 90 cm / W: 150 cm / H: 122 cm  
Packing Size L: 220 cm x 100 cm x 135 cm

Machine Approx. Weight : 260 kg  
Machine Gross Weight : 300 kg

