

PT 6200-783D

COMPUTERIZED DECORATIVE HAND STITCH MACHINE



Website

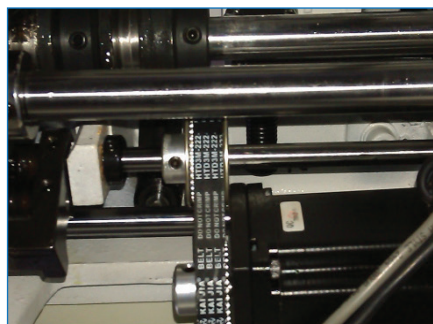


Youtube

PERFORMANCE

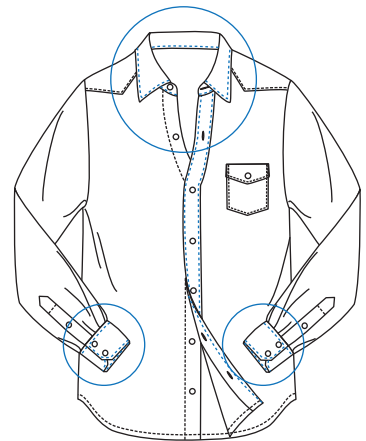
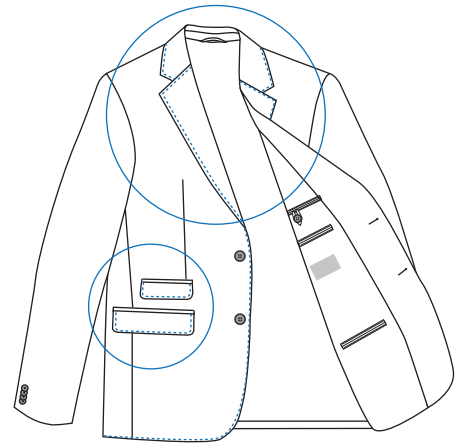
13 - 17 Jackets / 1 Hour

100 - 130 Jackets / 8 Hours



TECHNICAL SPECIFICATIONS

- Back- tack
- Digital stitch size
- LED operation panel
- Corner thread unhooking device
- Embedded integrated control system
- Automatic trimmer
- DD motor
- Un-twinkled LED cool-light lamp (protect the eyes)
- Single stitch distance (easy operation), adjustable stitch length various kinds of thread acceptable (lower thread cost)
- Adjustable thread tension (according to detail requests)
- Digital down stop position



TECHNICAL DETAILS

Motor power : 0.55-0.75kw

Input : 220V/50Hz

Electronic control Stitch length(mm) : 0.5mm-7.0mm

