

PT 6300-785

COMPUTERIZED DECORATIVE HAND STITCH MACHINE



Website

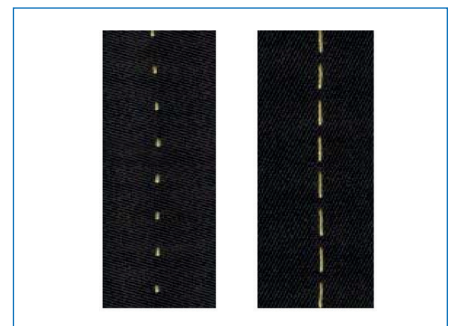


Youtube

PERFORMANCE

13 - 17 Jackets / 1 Hour

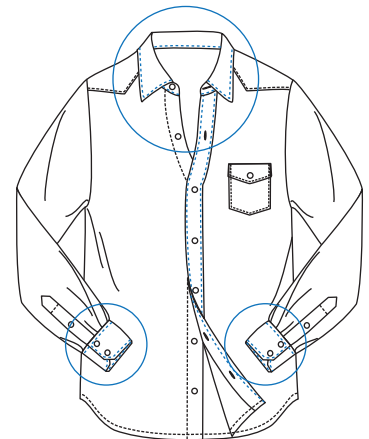
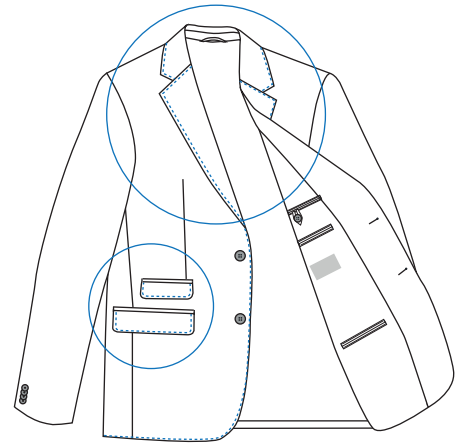
100 - 130 Jackets / 8 Hours



- 1: Classic mens wear, light ladies wear and shirts ; Heavy mens wear, ladies wear; Jeans and leather accessories.
- 2: This machine is equipped with computerized digital control system, to adjust sewing speed, needle gauge and stitch length.
- 3: The machine has automatic lifter of presser foot and knee lifter of presser foot and has the option to trim automatically.
- 4: It has half needle adjustment button, positive and negative pin-point shift button by foot, and backtacking function.
- 5: The decorative stitches could be changed easily and 1000 kinds of different hand stitches could be stored into the program.
- 6: It is also provided with needle protector, which means the needle will not break even at high-speed sewing, thick fabrics.
- 7: Besides special threads, it can also use lower quality threads to reduce thread cost.
- 8: Due to crocheting design, putting thread into hooked needle is all that you have to do. To sew thin fabrics all you need to do is to press the button to loosen the thread fingers.
- 9: The built-in direct drive motor reduces the number of mechanical parts which increases machine's durability.

TECHNICAL SPECIFICATIONS

- Speed : 200 spm



DIMENSIONS

L: 130 cm / W: 89 cm / H: 129 cm
 Packing Size : 140 cm x 100 cm x 145 cm
 Machine Net Weight : approx. 210 kg
 Machine Gross Weight : approx. 300 kg

