

## R-MA 271

UNIVERSAL BLIND STITCH

## R-MA 221

BLIND STITCH ON SLEEVES,  
SKIRTS & JACKET WITHOUT LINING



Website



Youtube

### PERFORMANCE

115 - 125 Trousers / 1 Hour  
900 - 1000 Trousers / 8 Hours

100 - 120 Jackets / 1 Hour  
800 - 900 Jackets / 8 Hours



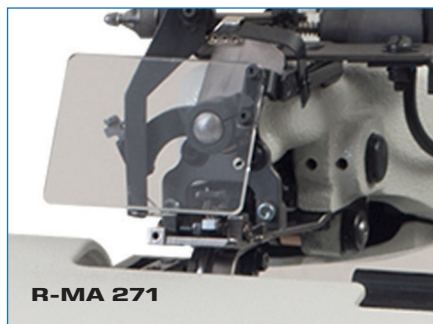
R-MA 271



R-MA 221



R-MA 221



R-MA 271



R-MA 271

## R-MA 271

Maier universal blind stitch machine [light, medium and heavy fabrics], maximum sewing speed 3.000 s.p.m., compact body [vibration-free work and accurate stitch], automatic spring-loaded rib shaft device [plunger] ensures high quality even when sewing over cross seams, skip stitch device [interval] 1:1/1:2, on request 1:3. It is used to hidden stitch jackets' skirts, trousers' leg bottoms and edges of ladies skirts.

### TECHNICAL SPECIFICATIONS

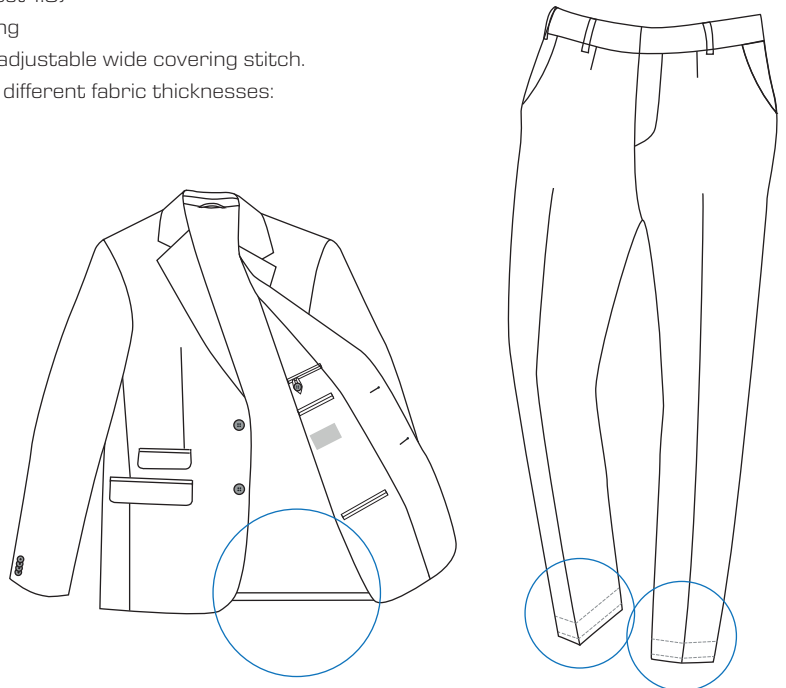
- Compact and therefore vibration-free construction.
- Retractable workplate.
- Accurate stitching also at high speeds.
- Adequate working width for most of the blind hemming works.
- Small cylinder arm for sleeves, gloves etc.
- With skip stitch device 1:1 / 1:2 reversible (on request 1:3)
- With spring-loaded rib shaft (plunger) which is automatically depressed at changing cloth layers, e.g. cross seams, pockets etc. so that the needle pierces the upper cloth layer only.
- The spring pressure of the spring-loaded rib shaft (plunger) can be modified by means of 3 springs supplied with the machine

## R-MA 221

Maier blind stitch machine [light, medium and heavy fabrics] with a special equipment for sewing jackets without lining, maximum sewing speed 3.000 s.p.m., compact body [vibration-free work and accurate stitch], skip stitch device [interval] 1:1/1:2, on request 1:3. Ideal for sleeves, trousers, skirts and jackets. Compact short-arm machine with skip stitch device. It is used on bookseaming for jackets without lining or semi-lining and hidden stitching jackets' arm sleeves.

### TECHNICAL SPECIFICATIONS

- With skip stitch device 1:1 / 1:2 reversible (on request 1:3)
- Bookseaming for jackets without lining or semi-lining
- With integrated special folder for simple folds and adjustable wide covering stitch.
- The folders are available in different widths and for different fabric thicknesses:
  - Widths: 5.5, 6.5, 8 and 10 mm.
  - Diameters of folders: 0.5, 1.0, 1.5 and 2.5 mm.
- Special widths on request



### TECHNICAL DETAILS

Stitch Type: 103  
Stitches Per Minute, up to: 3000  
Needle System: 251EU  
Stitch Length: 3-8 mm  
Hand-wheel Diameter (effective): 63 mm  
Motor Speed: 1400 rpm.  
Motor V-belt pulley (effective diameter): 125

