



R-PS 1010G (10 x 10 mm)
R-PS 1022G (10 x 22 mm)
R-PS 2030G (20 x 30 mm)

AUTOMATIC PATTERN SEWER



Website

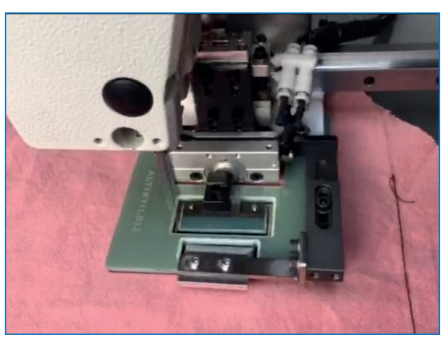


Youtube



PERFORMANCE

450- 500 pieces / 1 hour
3600 - 4000 pieces / 8 hours



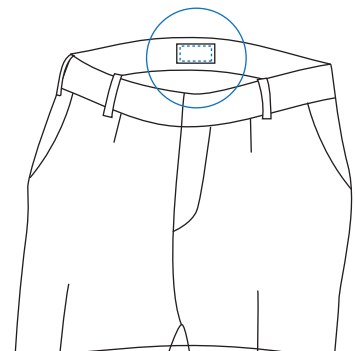
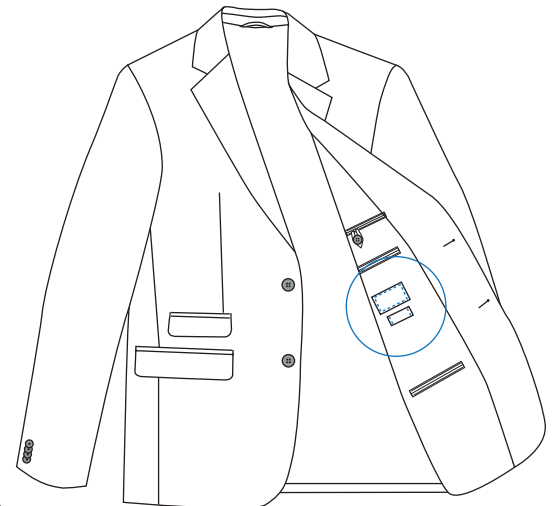
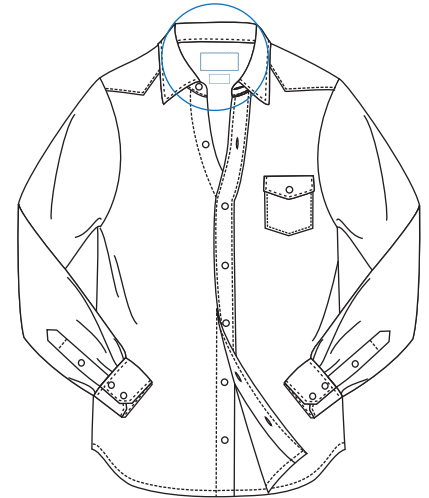
The R-PS 1010G, R-PS 1022G and R-PS 2030G Automatic Pattern Sewer is an X-Y motion machine which can even stitch patterns like an embroidery machine. The machine adopts computer direct drive without transmission loss and is equipped with electricity-saving motor of which energy consumption is 35% less than a traditional machine.

TECHNICAL SPECIFICATIONS

- Driven by pulse motor, height of lift-presser foot is set as 2-phase.
- Maximum 20,000 stitches / pattern
- Work clamp height : Standart Max. 25 mm – Optional Max. 30 mm
- 2-step presser foot : integrated presser foot & divided presser foot
- Height of intermittent presser foot : 22 mm
- Stroke of intermittent presser foot : 0 or 2 - 10 mm (Factory setting : 3mm)
- Thread wipe device & thread trimmer device
- Data storage: Standard USB interface, U disk storage

ADVANTAGES

- Achieve a beautiful stitch with the minimum resolution of 0.05 mm
- High speed, beautiful stitch , energy-saving
- Easy positioning of sewing greatly reduces set time
- The pedal reacts quickly, which reduces the noise for more comfortable work.



TECHNICAL DETAILS

Stitch Type : Single-needle flat stitch

Max. Sewing speed: 2,800 rpm

R-PS 1010G

Sewing area (XxY) : Max. 10mm x 10mm

R-PS 1022G

Sewing area (XxY) : Max. 22mm x 10mm

R-PS 2030G

Sewing area (XxY) : Max. 30mm x 20mm

Stitch length : 0.05 - 12.7mm

Motor : AC servomotor 750W

Power : 220V, 3-phase 380V

Air pressure : 0.5 Mpa 1.7 l/min

DIMENSIONS

L: 110 cm / W: 60 cm / H: 71 cm

Packing Size : 130 cm x 77 cm x 115 cm

Machine Net Weight : approx. 105 kg

Machine Gross Weight : approx. 130 kg

