

SS 3400-EX-IX

SERGING AUTOMAT WITHOUT LINING



Website

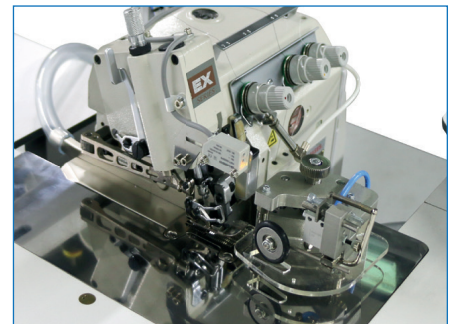
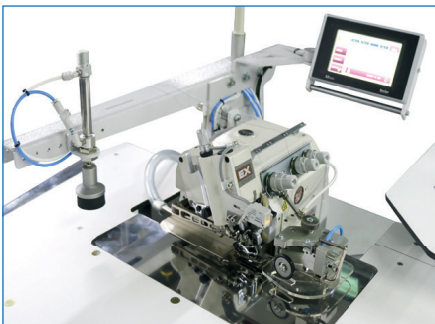


Youtube

PERFORMANCE

110 trousers with 4 sides without lining / 1 hour

900 trousers with 4 sides without lining / 8 hours



The sewing unit SS 3400 - EX - IX is for automatic serging of trousers without lining as well as skirts and small pieces. The Pegasus EX 5204 head on the automat offers excellent solution for the very fast and rational serging of front and hind trousers parts ; skirts and small pieces. The automat has the capability to start the right side leg from the top and left side from the bottom depending on the application.

TECHNICAL SPECIFICATIONS

- Pegasus EX 5204, three thread overlock machine head
- Fabric edge controller which regulates and guides the entry of the work into the machine.
- Stitching start automatic with photocell feeding
- Long version Machine, Chassis with adjustable height
- Universal Stacker Unit
- Beijer , Windows Based 256 Million Colour Supported Touch screen Control Panel
- Easy to use, with Pictures on the Operator Panel and with 50 Different Programming
- Feature to operate with all sides in order/cycle programming
- PLC Control Unit
- Sewing Motor : AC Servo Motor (Optional : EFKA Mini Stop Motor)
- Thread cutting and suction at stitch beginning and end
- Regular seam widths
- Air blowing holes over the table top provides the easy flow of fabric to the back.
- Fabric holder piston
- Pneumatic stacker
- Short instruction times due to easy handling
- Extra working table
- Yarn waste compartment

OPTIONS

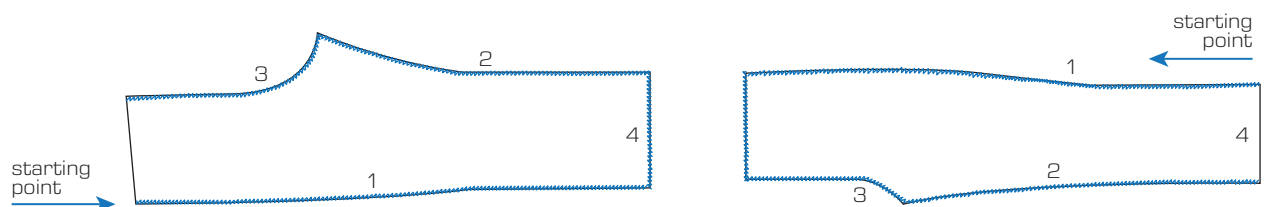
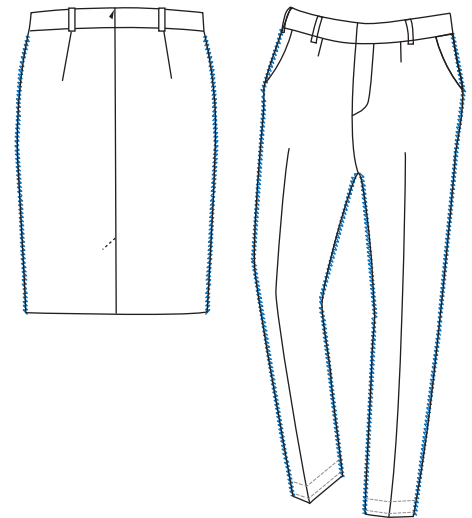
- Stitch Widths: 4mm / 5mm or 6mm Head Plate

AREAS OF USAGE

- Trousers without lining for men and women, skirts and various small pieces

ADVANTAGES

- The curves on the crotch area can be sewn with high speed and precision
- The pre-programming from the Control Panel allows cycle sewing of varying sides of leg panels
- Pegasus EX 5204 is a very fast , flexible and efficient head and the together with programmable control panel it provides unmatched speed and efficiency compared to manual operation



TECHNICAL DETAILS

Max. Sewing Speed : 6.500 r.p.m
 Max. Stitch Length : 1 or 3,8 mm
 Connection Voltage: AC 230 V, 50/60 Hz
 Air Pressure : 6 bar

DIMENSIONS

L: 155 cm / W: 105 cm / H: 120 cm
 Packing Size : 186 cm x 117 cm x 145 cm
 Machine Net Weight : approx. 145 kg
 Machine Gross Weight : approx. 185 kg

