

D-BE 9820-02

ELECTRONIC EYELET BUTTON HOLER



Website



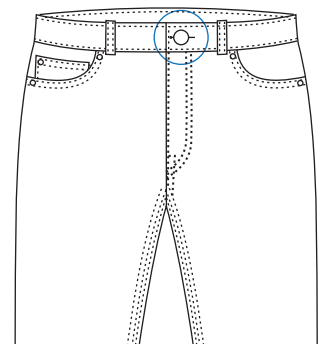
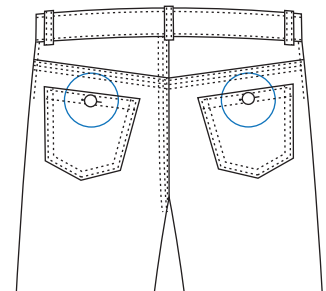
Youtube



Improved thread catching structure to avoid thread fall off. Special processing of gears and cams led to a significant reduction in noise and vibration levels by a scientifically tested 8-10 dB. This greatly improves the operator comfort and efficiency.

TECHNICAL SPECIFICATIONS

- Improved pipe port to make connection much easier.
- Improved looper and thread pick-up, machine can stitch different fabrics with different threads.
- 3.0mm-wide zigzag sewing, after-sewing cutting.
- 2 pieces of polyester serge (one side of one piece has a layer).
- Span thread: #40
- Tension force of end thread: 30g
- Sewing speed: 2,500 rpm
- The machine controlled by servo system, it makes the patterns accurate even in high speed stitching. Servo control system avoids the initial position checking.
- R-W 9820-01 has liquid crystal display (LCD), supported by icon and character display.
- Makes it easier for the operator to understand the setting or changing of the sewing modes.



TECHNICAL DETAILS

Max. Sewing Speed : 2.500 r.p.m
 Zigzag sewing width (factory setting) : 2.5mm
 Length of stream thread : 0-20mm
 Single phase : 100V/200V
 Three phases : 200V/220V/380V/400V, 400VA

DIMENSIONS

L: 110 cm / W: 60 cm / 71 cm
 Packing Size : 130 cm x 77 cm x 115 cm
 Machine Net Weight : approx. 151 kg
 Machine Gross Weight : approx. 171 kg

