

D-BF 420

BARTACK MACHINE WITH AUTO FELT FEEDING SYSTEM



Website



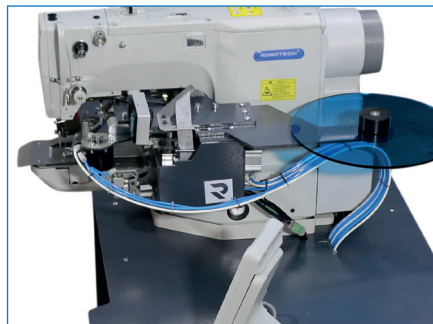
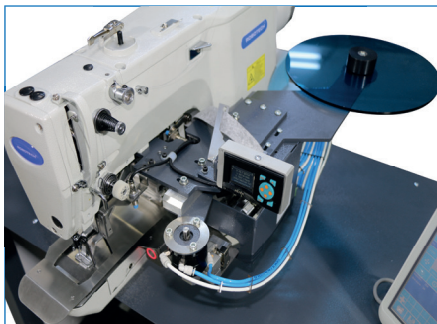
Youtube



PERFORMANCE

2000 Pieces / 8 Hours

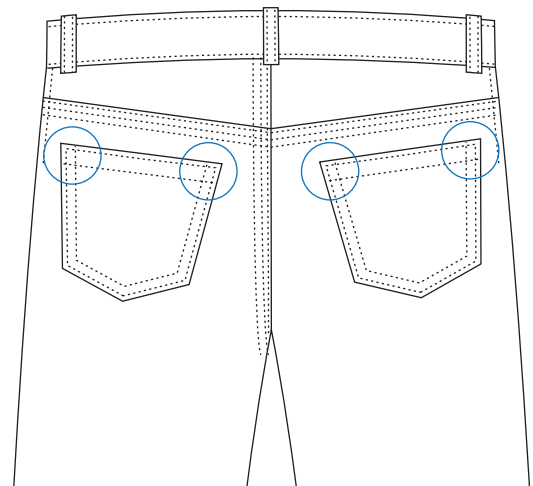
250 Pieces / 1 Hour



The bartack stitches on the back-pocket corners and at the edges of the belt loops damages the fabric during washing; manufacturers began using felt pieces under the bartack stitches. However this operation led to extra man power and time causing extra cost as well as inconsistencies. D-BF 420 is has an electronically controlled automatic felt feeding and cutting system attached to a Brother type head to solve all these in one. Brother type bar tack head is an oil-free, clean and durable machine thanks to the black diamond bar thread pick-up lever and the micro-oil lubrication system direct to the rotary hook. Fabrics are prevented from oil stains.

TECHNICAL SPECIFICATIONS

- **Brother** Electronic direct drive lockstitch bar tacker
- Automatic felt cutting and feeding system
- Felt width - length adjustment feature
- High speed feeding system
- Felt feeding and feeding cycle system
- Minimum Felt Piece Size: Xmm - Ymm



TECHNICAL DETAILS

Max. Sewing Speed : 3200 r.p.m
 Max. Stitch Length : 0.05 - 12.7 mm
 Connection Voltage: AC servo motor 550 W
 Air Pressure : 6 bar

DIMENSIONS

L: 110 cm / W: 60 cm / H: 71 cm
 Packing Size : 130 cm x 77 cm x 115 cm
 Machine Net Weight : approx. 151 kg
 Machine Gross Weight : approx. 171 kg

