



**D-XY 1010G** (10 x 10 mm)  
**D-XY 1022G** (10 x 22 mm)  
**D-XY 2030G** (20 x 30 mm)

AUTOMATIC PATTERN SEWER



Website



Youtube



## PERFORMANCE

3600 - 4000 pieces / 8 hours

450- 500 pieces / 1 hour



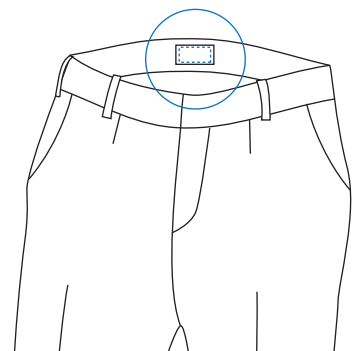
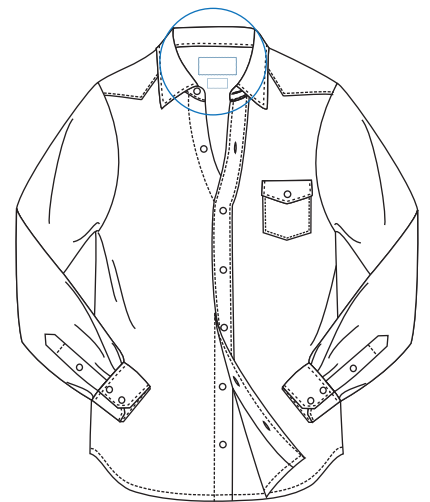
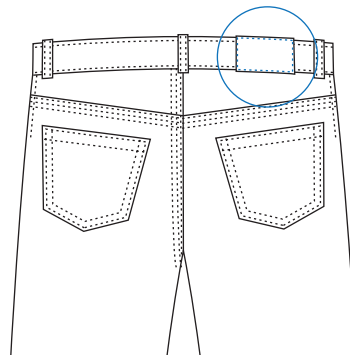
The D-XY 1010G, D-XY 1022G and D-XY 2030G Automatic Pattern Sewer is an / are X-Y motion machines which can stitch patterns like an embroidery machine. The machine adopts computer direct drive without transmission loss and is equipped with electricity-saving motor of which energy consumption is 35% less than a traditional machine.

## TECHNICAL SPECIFICATIONS

- Driven by pulse motor, height of lift-presser foot is set as 2-phase.
- Maximum 20,000 stitches / pattern
- Work clamp height : Standart Max. 25 mm - Optional Max. 30 mm
- 2-step presser foot : integrated presser foot & divided presser foot
- Height of intermittent presser foot : 22 mm
- Stroke of intermittent presser foot : 0 or 2 - 10 mm (Factory setting : 3mm)
- Thread wipe device & thread trimmer device
- Data storage : Standard USB interface, U disk storage

## ADVANTAGES

- Achieve a beautiful stitch with the minimum resolution of 0.05 mm
- High speed, beautiful stitch , energy-saving
- Easy positioning of sewing greatly reduces set time
- The pedal reacts quickly, which reduces the noise for more comfortable work.



## TECHNICAL DETAILS

Stitch Type : Single-needle flat stitch  
 Max. Sewing speed: 2,800 rpm  
 Stitch length : 0.05 - 12.7mm  
 Motor : AC servomotor 750W  
 Power : 220V, 3-phase 380V  
 Air pressure : 0.5 Mpa 1.7 l/min

## DIMENSIONS

L: 110 cm / W: 60 cm / H: 71 cm  
 Packing Size : 130 cm x 77 cm x 115 cm  
 Machine Net Weight : approx. 105 kg  
 Machine Gross Weight : approx. 130 kg

